

## Electrical Specifications

|  |                                |
|--|--------------------------------|
| <b>ANSI/TIA Category</b>                                     | 6                              |
| <b>Contact Resistance Variation, maximum</b>                 | 20 mOhm                        |
| <b>Contact Resistance, maximum</b>                           | 100 mOhm                       |
| <b>Current Rating</b>  | 1.5 A @ 20 °C<br>1.5 A @ 68 °F |
| <b>Dielectric Withstand Voltage, RMS, conductive surface</b> | 1500 Vac @ 60 Hz               |
| <b>Dielectric Withstand Voltage, RMS, contact-to-contact</b> | 1000 Vac @ 60 Hz               |
| <b>Insulation Resistance, minimum</b>                        | 500 MOhm                       |

## Environmental Specifications

|                              |                                      |
|------------------------------|--------------------------------------|
| <b>Flammability Rating</b>   | UL 94 V-0                            |
| <b>Operating Temperature</b> | -10 °C to +60 °C (+14 °F to +140 °F) |
| <b>Relative Humidity</b>     | Up to 95%, non-condensing            |
| <b>Safety Standard</b>       | cUL   UL                             |
| <b>Storage Temperature</b>   | -40 °C to +70 °C (-40 °F to +158 °F) |

## General Specifications

|                         |                    |
|-------------------------|--------------------|
| <b>Cable Type</b>       | U/UTP (unshielded) |
| <b>Color</b>            | Blue               |
| <b>Package Quantity</b> | 1                  |

## Mechanical Specifications

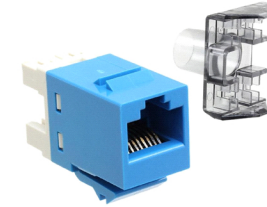
|                                       |  |
|---------------------------------------|--|
| <b>Conductor Gauge, solid</b>         | 22 AWG   24 AWG  |
| <b>Conductor Gauge, stranded</b>      | 24 AWG   26 AWG  |
| <b>Conductor Type</b>                 | Solid   Stranded   |
| <b>Contact Plating Material</b>       | Precious metals  |
| <b>Material Type</b>                  | Copper alloy   High-impact, flame retardant, thermoplastic |
| <b>Plug Insertion Life, minimum</b>   | 750 times  |
| <b>Plug Insertion Life, test plug</b> | IEC 60603-7 compliant plug                                 |
| <b>Plug Retention Force, minimum</b>  | 30 lbf   133 N   |
| <b>Termination Contact Plating</b>    | Nickel   |
| <b>Termination Type</b>               | IDC  |
| <b>Wiring</b>                         | T568A   T568B  |

## Regulatory Compliance/Certifications

| Agency          | Classification   |
|-----------------|--|
| RoHS 2011/65/EU | Designed, manufactured and/or distributed under this quality management system |
| ISO 9001:2015   |  |



## Product Photo



an INFINIT® brand  
www.showmecables.com  
888-519-9505 | sales@showmecables.com

Title

CommScope Uniprise USL Modular  
RJ45 Jack, Cat6 UTP without Dust  
Cover

Part Number

USL600-BLUE

Notes

1. Unless otherwise specified all dimensions are nominal
2. All specifications are subject to change without notice at any time
3. Dimensions are in millimeters